

Technical drawing of a drainage system layout for a building site. The drawing shows 15 manholes (PM1 to PM15) and 15 manhole boxes (BPM1 to BPM15). The layout is defined by a grid with dimensions in meters. The drawing includes a scale bar (0.00m) and a north arrow. The drawing is labeled "LIMITE DO TERRENO" and "CALÇADA".

Manhole and Manhole Box Details:

- PM1: W150x22.5, BPM1: 80x80 h=30
- PM2: W150x22.5, BPM2: =BPM1
- PM3: W150x22.5, BPM3: =BPM1
- PM4: W150x22.5, BPM4: =BPM1
- PM5: W150x22.5, BPM5: =BPM1
- PM6: W150x22.5, BPM6: =BPM1
- PM7: W150x22.5, BPM7: =BPM1
- PM8: W150x22.5, BPM8: =BPM1
- PM9: W150x22.5, BPM9: =BPM1
- PM10: W150x22.5, BPM10: =BPM1
- PM11: W150x22.5, BPM11: =BPM1
- PM12: W150x22.5, BPM12: =BPM1
- PM13: W150x22.5, BPM13: =BPM1
- PM14: W150x22.5, BPM14: =BPM1
- PM15: W150x22.5, BPM15: =BPM1

Grid Dimensions (meters):

- Horizontal: 400, 390, 700, 280, 170, 535, 2210, 590, 200, 500, 1185, 510, 790, 3000
- Vertical: 135, 565, 850, 345, 271, 265, 629, 640, 175, 210, 2210, 200

Other Labels: EXISTENTE, LIMITE DO TERRENO, CALÇADA, 0.00m.

B – BLOCO CONCRETO  
VM – VIGA METÁLICA  
PM – PILAR METÁLICO

- JATEAMENTO COMERCIAL
- ZARÇÃO 50µ ATÉ 2 HORAS APÓS JATEAMENTO
- PINTURA 125µ ESMALTE SINTÉTICO
- SOLDAS ELETRODO E-70X
- ESPESSURAS DO FILETE 3mm.
- COTAS E ESPESSURA EM MILÍMETROS
- COBRIMENTO DAS ARMADURAS : 5cm

QUANTITATIVO:	VOLUME:
-CONCRETO SIMPLES( $F_{ck}=10\text{MPa}$ )	7,5 m <sup>3</sup>
-CONCRETO $F_{ck}\geq 25\text{MPa}$	2,9 m <sup>3</sup>
-ESCAVAÇÃO	15,0 m <sup>3</sup>

ESCALA: 1/25

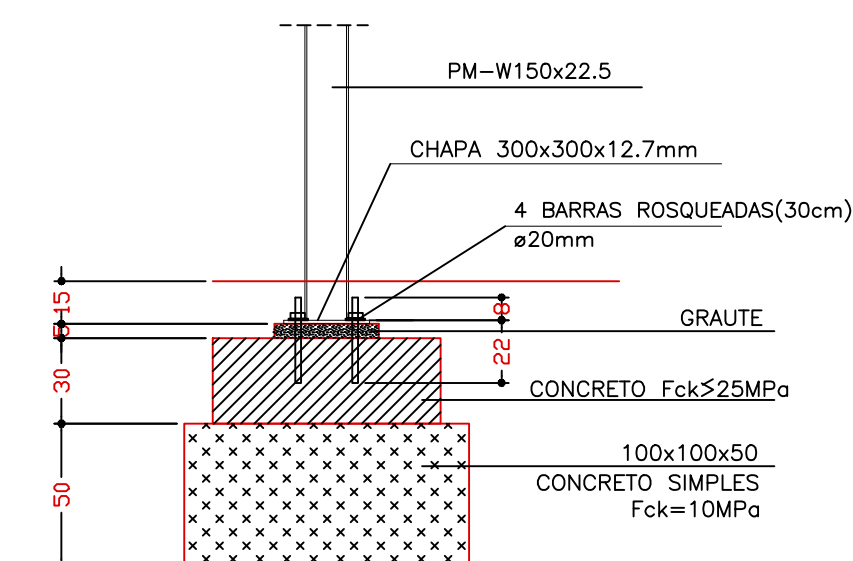
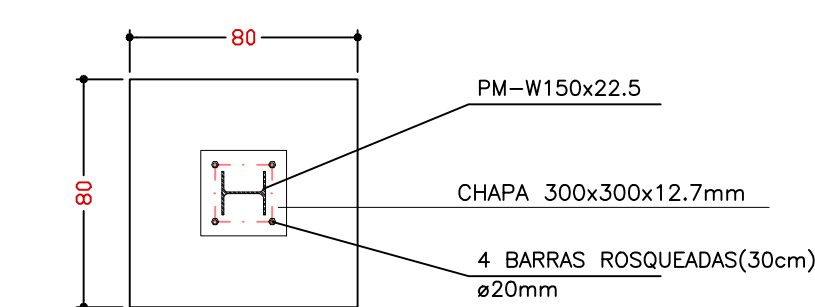


Diagram of an I-beam cross-section with dimensions: height 152, flange width 152, and web thickness 5.8.

CHAPA—300x300x12.7mm

4 BARRAS ROSQUEADAS (30cm)  
ø20mm  
(ASTM—A1963B)  
4 FUELOS DE ø25mm


300

300

Technical drawing of a rectangular plate. The top view shows a rectangle with overall dimensions of 80 (width) and 80 (height). A central square hole is indicated with a dimension of  $60N^*1$ . The side view shows the plate has a thickness of 30. The bottom view shows the plate has a width of 70 and a length of  $1-2 \times 60 \pm 13-110$ . The hole is located 20 units from the left and right edges.

N°	Ø	Q	COMP.	PES
BP1aBP15(15x)				
1	Ø8	180	110	78.

QUADRO RESUMO DE AÇO									
PEÇAS	CA-60	CA-50A							
	Ø5 (kgf)	Ø6,3 (kgf)	Ø8 (kgf)	Ø10 (kgf)	Ø12,5 (kgf)	Ø16 (kgf)	Ø20 (kgf)	Ø25 (kgf)	TOTAL (kgf)
BP1aBP15(15x)	x	x	78	x	x	x	x	x	7
TOTAL: (kgf)	x	x	78	x	x	x	x	x	7
	Ø5	Ø6,3	Ø8	Ø10	Ø12,5	Ø16	Ø20	Ø25	

	<b>POLICONSULT - Associação Politécnica de Consultoria</b>
	Rua Benfica, 455, Escola Politécnica de Pernambuco, Bloco A Madalena, Recife - PE. CEP: 50.702-001 Fone/Fax: (81) 3446.1508 <b>CNPJ: 41.227.190/0001-61</b> <a href="http://www.policonsult.org.br/policonsult@policonsult.org.br">www.policonsult.org.br/policonsult@policonsult.org.br</a>

PROJETO ESTRUTURAL: FORMA E ARMADAÇÃO DA FUNDAÇÃO DE REFORÇO DO  
CARTÓRIO ELEITORAL DE JACARÁ – TRE/PB

---

DATA: 10/08/2017

ESCALA: 1/50

---

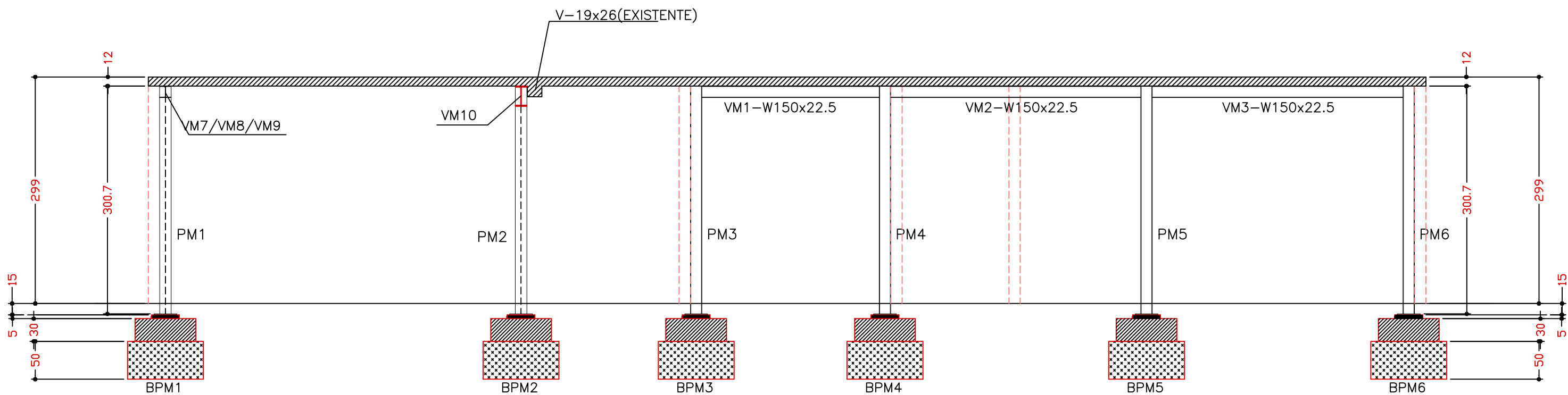
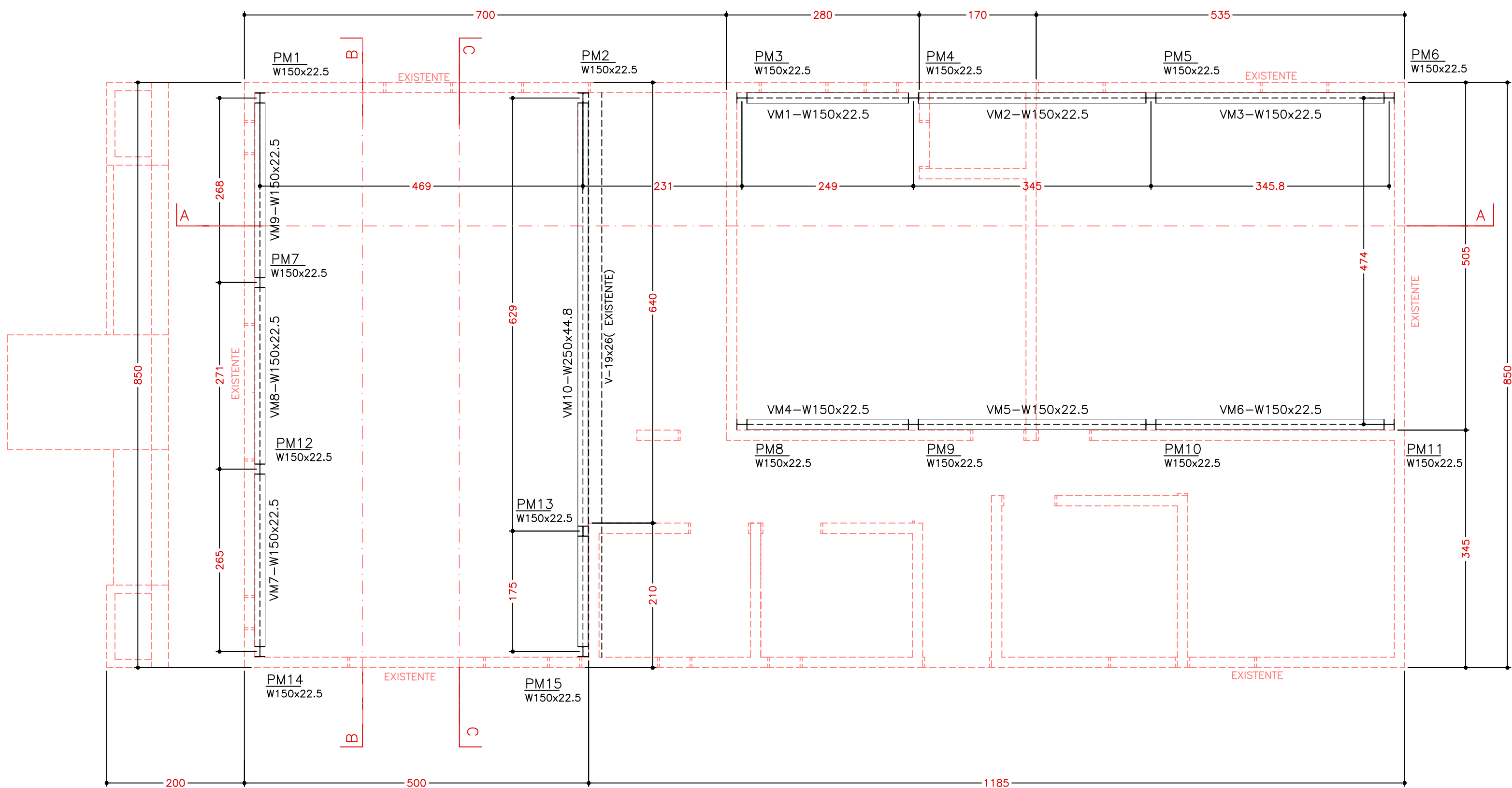
RESP. TÉCNICO: SÉRGIO OSÓRIO DE CERQUEIRA

Crea 4.000-D PE/RN

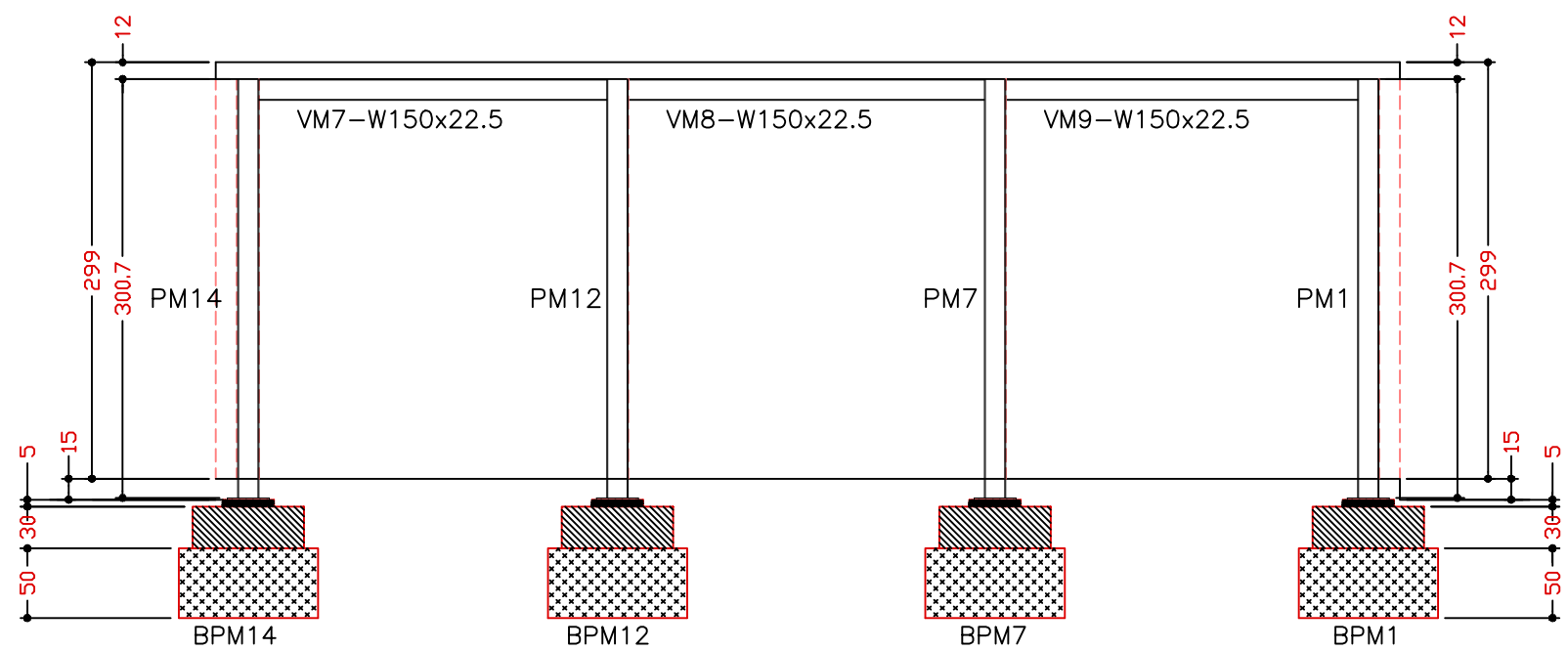
---

ARQUIVO: CARTÓRIO_ELEITORAL_JACARÁ_01_FDDA_01_00	OBRA 17.030
--	-------------

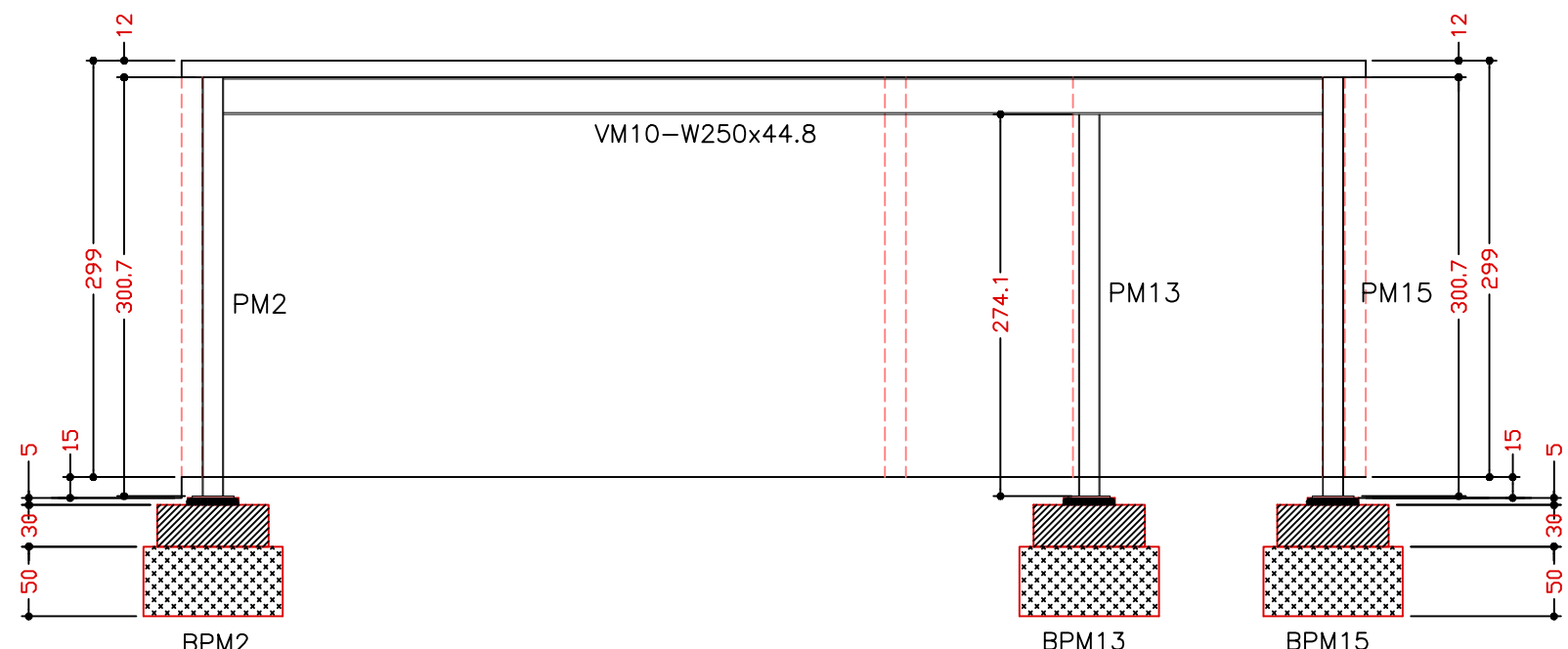
REFORÇO METÁLICO NA LAJE



CORTE A-A

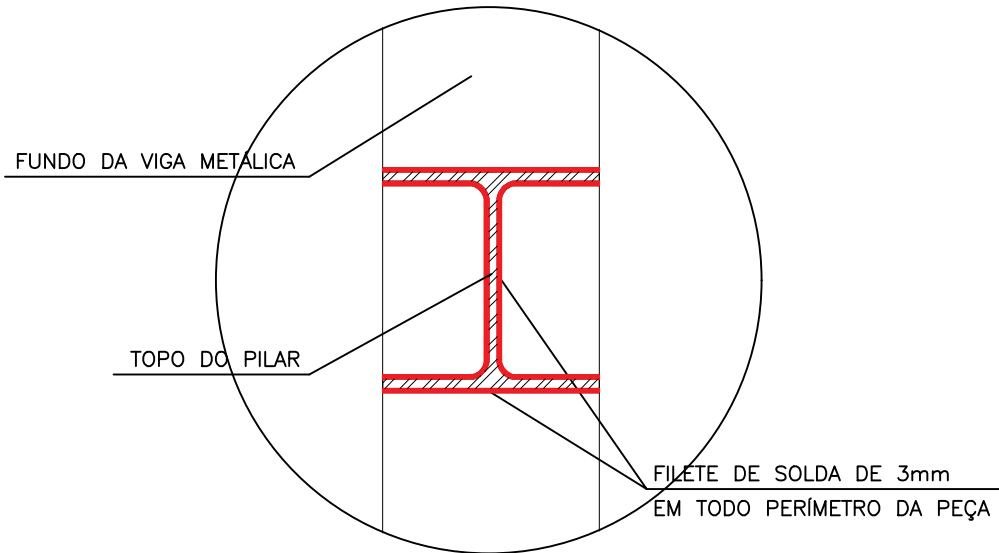


CORTE B-B

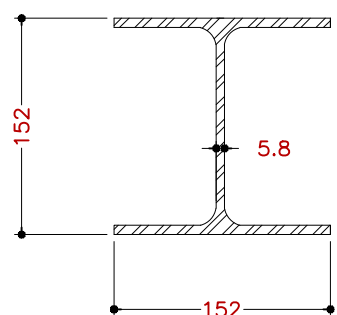


CORTE C-C

DETALHE: ENCONTRO VIGA x TOPO DO PM13  
ESCALA:1/5



PM1aPM15  
DETALHE  
W150x22.5kg/m  
ESCALA:1/5



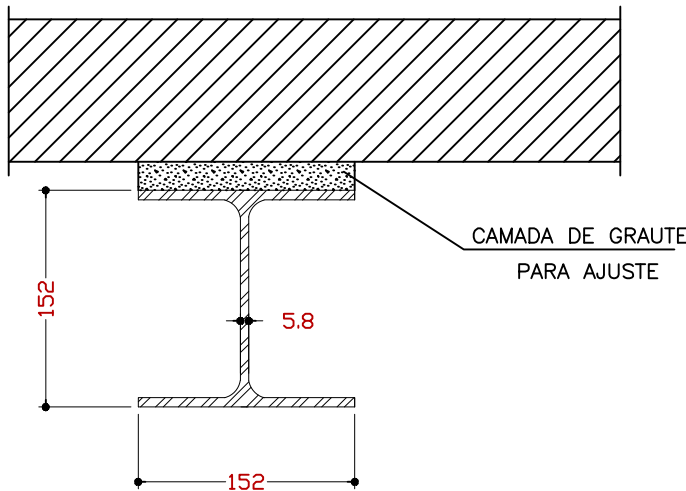
LEGENDA:

B - BLOCO CONCRETO  
VM - VIGA METÁLICA  
PM - PILAR METÁLICO

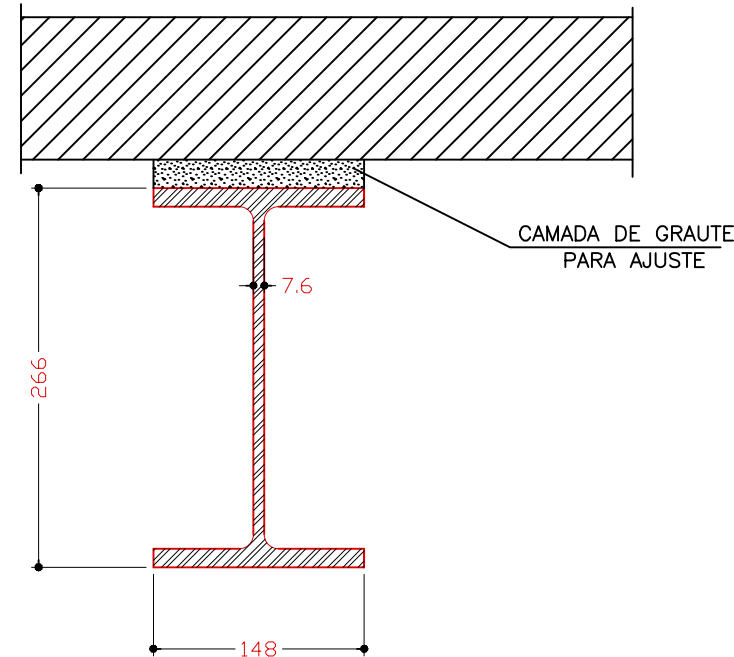
ESPECIFICAÇÕES:

-JATEAMENTO COMERCIAL  
-ZARÇAO 50µ ATÉ 2 HORAS APÓS JATEAMENTO  
-PINTURA 125µ ESMALTE SINTÉTICO  
-SOLDAS ELETRODO E-70X  
-ESPESSURAS DO FILETE 3mm.  
-COTAS E ESPESSURA EM MILÍMETROS  
-COBRIMENTO DAS ARMADURAS : 5cm

VM1,VM2,VM3,VM4,VM5,VM6,  
VM7,VM8,VM9  
DETALHE  
W150x22.5kg/m  
ESCALA:1/5



VM10  
DETALHE  
W250x44.8kg/m  
ESCALA:1/5



PESO TOTAL DE ACO: 2065,58 Kg					
N°	Refer.	Especificacoes	Material	Quant.	Peso
12					
11	VM10	W 250x44,8 kg/m (7870mm)	ASTM-A36	1 unid.	352,58 kgf
10	VM9	W 150x22,5 kg/m (2510mm)	ASTM-A36	1 unid.	56,48 kgf
9	VM8	W 150x22,5 kg/m (2540mm)	ASTM-A36	1 unid.	57,15 kgf
8	VM7	W 150x22,5 kg/m (2480mm)	ASTM-A36	1 unid.	55,80 kgf
7	VM3=VM6	W 150x22,5 kg/m (3288mm)	ASTM-A36	2 unid.	147,96 kgf
6	VM2=VM5	W 150x22,5 kg/m (3280mm)	ASTM-A36	2 unid.	147,60 kgf
5	VM1=VM4	W 150x22,5 kg/m (2320mm)	ASTM-A36	2 unid.	104,40 kgf
4	FIXAÇÃO PM(s)	BR #20mm (BARRA ROSQUEADA - 30cm)	ASTM-A193B	60 unid.	
3	FIXAÇÃO PM(s)	CH. 300x300x12.7mm	ASTM A36	15 unid.	134,59 kgf
2	PM13	W 150x22,5 kg/m (2747mm)	ASTM-A36	1 unid.	61,81 kgf
1	PM1aPM12,PM14ePM15	W 150x22,5 kg/m (3007mm)	ASTM-A36	14 unid.	947,21 kgf

R1	DETALHE DO ENCONTRO VIGA/PILAR	21/12/17			
REVISÃO	NATUREZA	DATA	VISTO	CIENTE	
<div><div></div><div><b>POLICONCONSULT - Associação Politécnica de Consultoria</b> Rua Benfica, 455, Escola Politécnica de Pernambuco, Bloco A Madalena, Recife - PE. CEP: 50.702-001 Fone/Fax: (81) 3446.1508 <b>CNPJ: 41.227.190/0001-61</b> www.policonconsult.org.br/policonconsult@policonconsult.org.br</div></div> <div>PROJETO ESTRUTURAL: REFORÇO METÁLICO NA LAJE DO CARTÓRIO ELEITORAL DE JACARAÚ - TRE/PB</div> <div>PRANCHA: 02/02</div> <div>DATA: 10/08/2017</div> <div>ESCALA:1/50</div> <div>RESP. TECNICO: SÉRGIO OSÓRIO DE CERQUEIRA</div> <div>Crea 4.000-D PE/PN</div> <div>ARQUIVO: CARTÓRIO_ELEITORAL_JACARAÚ_02_MTDG_01_R1</div> <div>OBRA 17.030</div>					